

## Sinusoidal Oscillators: Feedback Analysis

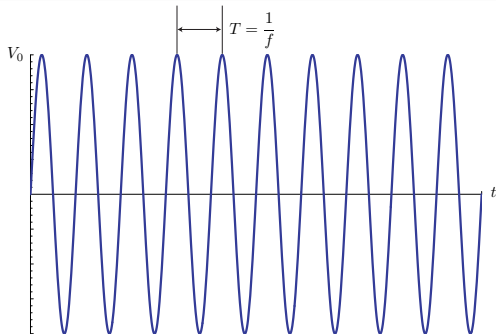
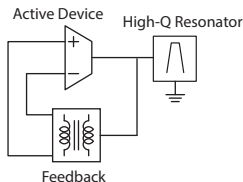
Prof. Ali M. Niknejad

U.C. Berkeley  
Copyright © 2015 by Ali M. Niknejad

- An oscillator is an essential component in communication systems, providing a carrier frequency for RF transmission, a local oscillator (LO) for up- and down-conversion, and a timing reference for data sampling and re-sampling.
- Before the advent of electronic oscillators, sinusoidal signals were generated from motors (which limited the highest frequency due to mechanical resonance), or from arcs and LC tanks, which were of limited utility.

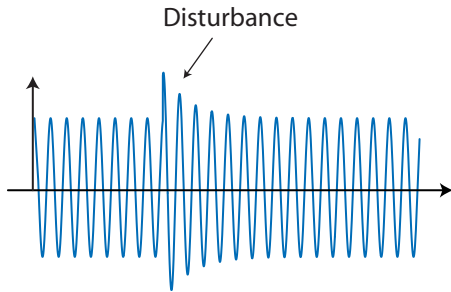
*Wikipedia: At least six researchers independently made the vacuum tube feedback oscillator discovery ... In the summer of 1912, Edwin Armstrong observed oscillations in audion radio receiver circuits and went on to use positive feedback in his invention of the regenerative receiver. German Alexander Meissner independently discovered positive feedback and invented oscillators in March 1913. Irving Langmuir at General Electric observed feedback in 1913. Fritz Lowenstein may have preceded the others with a crude oscillator in late 1911...*

# Electronic (Feedback) Oscillators



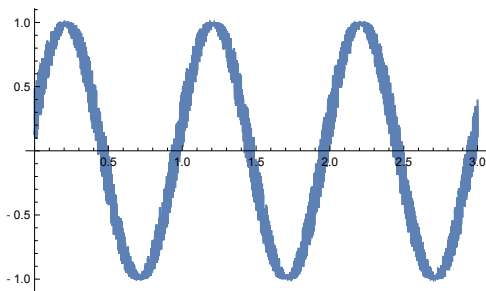
- An oscillator is an *autonomous* circuit that converts DC power into a periodic waveform. We will initially restrict our attention to a class of oscillators that generate a sinusoidal waveform.
- The period of oscillation is determined by a high-Q LC tank or a resonator (crystal, cavity, T-line, etc.). An oscillator is characterized by its oscillation amplitude (or power), frequency, “stability”, phase noise, and tuning range.

## Oscillators (cont)



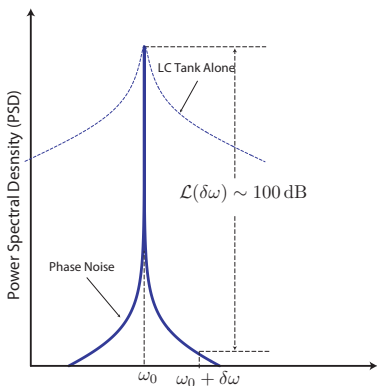
- Generically, a good oscillator is stable in that its frequency and amplitude of oscillation do not vary appreciably with temperature, process, power supply, and external disturbances.
- The amplitude of oscillation is particularly stable, always returning to the same value (even after a disturbance).

# Timing Jitter



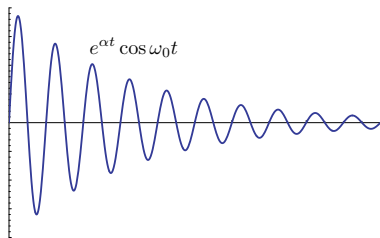
- Real oscillators don't have a precise period of oscillation. The period varies due to *phase noise* or timing jitter. The phase of the signal increases  $\omega t + \phi_n$  increases linearly but has a small noise component  $\phi_n$  that causes jitter.
- In the figure above, the noise is exaggerated greatly. In practice, this slight deviation will only be observed if millions of cycles of the oscillator are overlaid (using a digital oscilloscope for example).

# Phase Noise



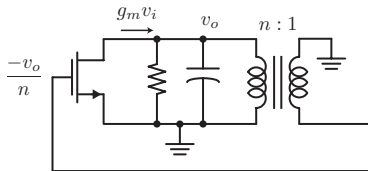
- Due to noise, a real oscillator does not have a delta-function power spectrum, but rather a very sharp peak at the oscillation frequency.
- The amplitude drops very quickly, though, as one moves away from the center frequency. E.g. a cell phone oscillator has a phase noise that is 100 dB down at an offset of only 0.01% from the carrier!

# An LC Tank “Oscillator”



- Note that an  $LC$  tank alone is not a good oscillator. Due to loss, no matter how small, the amplitude of the oscillator decays.
- Even a very high  $Q$  oscillator can only sustain oscillations for about  $Q$  cycles. For instance, an  $LC$  tank at 1 GHz has a  $Q \sim 20$ , can only sustain oscillations for about 20 ns.
- Even a resonator with high  $Q \sim 10^6$ , will only sustain oscillations for about 1 ms.

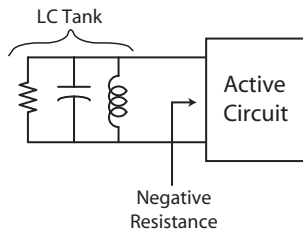
# Feedback Perspective



- Many oscillators can be viewed as feedback systems. The oscillation is sustained by feeding back a fraction of the output signal, using an amplifier to gain the signal, and then injecting the energy back into the tank. The transistor “pushes” the  $LC$  tank with just about enough energy to compensate for the loss.

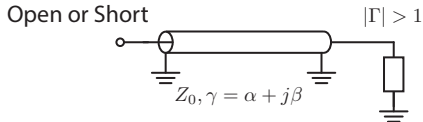


# Negative Resistance Perspective



- Another perspective is to view the active device as a negative resistance generator. In steady state, the losses in the tank due to conductance  $G$  are balanced by the power drawn from the active device through the negative conductance  $-G$ .

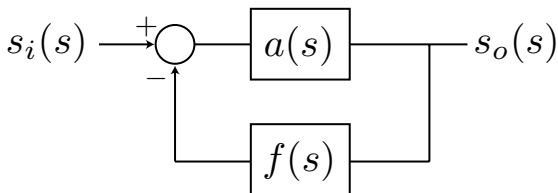
# Reflection Coefficient Perspective



- A completely equivalent way to see the negative resistance argument is to think of the reflection coefficient.
- Consider launching a wave down a transmission line. We know that the wave will have a period equal the round trip delay  $t_d$ . If we inject a wave into a transmission line resonator, the signal is attenuated due to the line loss and decays exponentially.
- If we can create a load with  $|\Gamma| > 1$  and the proper phase, then the wave will travel back and forth along the transmission line without any loss. A negative resistance is thus required.

$$\Gamma = \frac{Z - Z_0}{Z + Z_0}$$

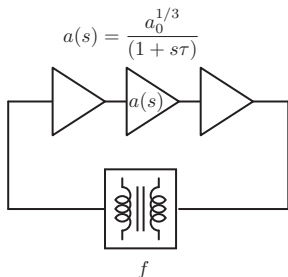
# Feedback Approach



- Consider an ideal feedback system with forward gain  $a(s)$  and feedback factor  $f(s)$ . The closed-loop transfer function is given by

$$H(s) = \frac{a(s)}{1 + a(s)f(s)}$$

# Feedback Example



- As an example, consider a forward gain transfer function with three identical real negative poles with magnitude  $|\omega_p| = 1/\tau$  and a frequency independent feedback factor  $f$

$$a(s) = \frac{a_0}{(1 + s\tau)^3}$$

- Deriving the closed-loop gain, we have

$$H(s) = \frac{a_0}{(+s\tau)^3 + a_0 f} = \frac{K_1}{(1 - s/s_1)(1 - s/s_2)(1 - s/s_3)}$$

# Poles of Closed-Loop Gain

- Solving for the poles

$$(1 + s\tau)^3 = -a_0f$$

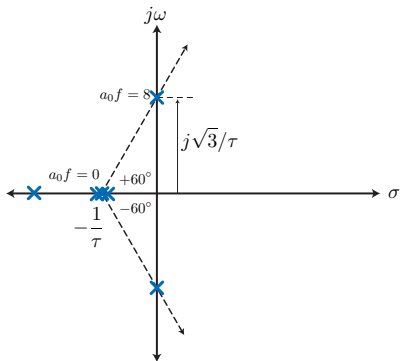
$$1 + s\tau = (-a_0f)^{\frac{1}{3}} = (a_0f)^{\frac{1}{3}}(-1)^{\frac{1}{3}}$$

$$(-1)^{\frac{1}{3}} = -1, e^{j60^\circ}, e^{-j60^\circ}$$

- The poles are therefore

$$s_1, s_2, s_3 = \frac{-1 - (a_0f)^{\frac{1}{3}}}{\tau}, \frac{-1 + (a_0f)^{\frac{1}{3}} e^{\pm j60^\circ}}{\tau}$$

# Root Locus



- If we plot the poles on the s-plane as a function of the DC loop gain  $T_0 = a_0 f$  we generate a *root locus*
- For  $a_0 f = 8$ , the poles are on the  $j\omega$ -axis with value

$$s_1 = -3/\tau$$

$$s_{2,3} = \pm j\sqrt{3}/\tau$$

- For  $a_0 f > 8$ , the poles move into the right-half plane (RHP)

# Natural Response

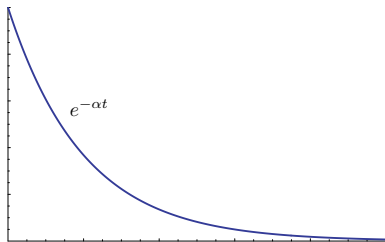
- Given a transfer function

$$H(s) = \frac{K}{(s - s_1)(s - s_2)(s - s_3)} = \frac{a_1}{s - s_1} + \frac{a_2}{s - s_2} + \frac{a_3}{s - s_3}$$

- The total response of the system can be partitioned into the *natural response* and the forced response

$$s_0(t) = f_1(a_1 e^{s_1 t} + a_2 e^{s_2 t} + a_3 e^{s_3 t}) + f_2(s_i(t))$$

- where  $f_2(s_i(t))$  is the forced response whereas the first term  $f_1()$  is the natural response of the system, even in the absence of the input signal. The natural response is determined by the initial conditions of the system.



- Stable systems have all poles in the left-half plane (LHP).
- Consider the natural response when the pole is on the negative real axis, such as  $s_1$  for our examples.
- The response is a decaying exponential that dies away with a time-constant determined by the pole magnitude.



# Complex Conjugate LHP Poles

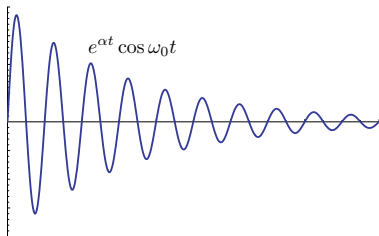
- Since  $s_{2,3}$  are a complex conjugate pair

$$s_2, s_3 = \sigma \pm j\omega_0$$

- We can group these responses since  $a_3 = \overline{a_2}$  into a single term

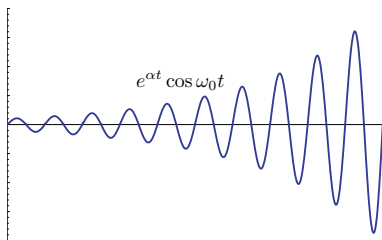
$$a_2 e^{s_2 t} + a_3 e^{s_3 t} = K_a e^{\sigma t} \cos \omega_0 t$$

- When the real part of the complex conjugate pair  $\sigma$  is negative, the response also decays exponentially.

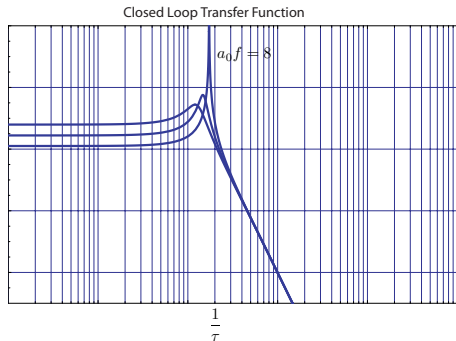


# Complex Conjugate Poles (RHP)

- When  $\sigma$  is positive (RHP), the response is an exponential growing oscillation at a frequency determined by the imaginary part  $\omega_0$
- Thus we see for any amplifier with three identical poles, if feedback is applied with loop gain  $T_0 = a_0 f > 8$ , the amplifier will oscillate.



# Frequency Domain Perspective

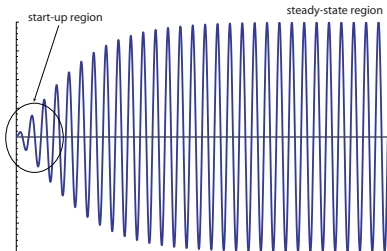


- In the frequency domain perspective, we see that a feedback amplifier has a transfer function

$$H(j\omega) = \frac{a(j\omega)}{1 + a(j\omega)f}$$

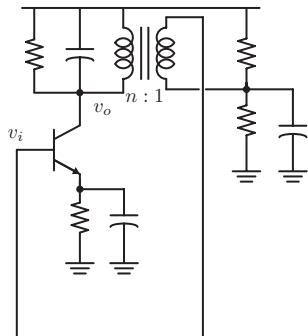
- If the loop gain  $a_0 f = 8$ , then we have with purely imaginary poles at a frequency  $\omega_x = \sqrt{3}/\tau$  where the transfer function  $a(j\omega_x)f = -1$  blows up. Apparently, the feedback amplifier has infinite gain at this frequency.

# Oscillation Build Up



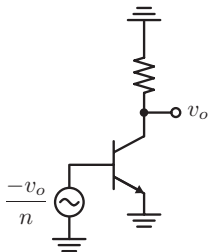
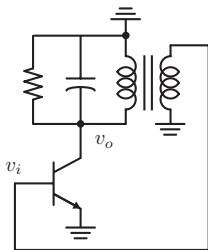
- In a real oscillator, the amplitude of oscillation initially grows exponentially as our linear system theory predicts. This is expected since the oscillator amplitude is initially very small and such theory is applicable. But as the oscillations become more vigorous, the non-linearity of the system comes into play.
- We will analyze the steady-state behavior, where the system is non-linear but periodically time-varying.

# Example LC Oscillator



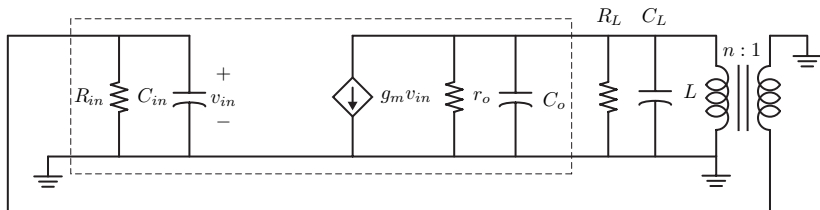
- The emitter resistor is bypassed by a large capacitor at AC frequencies.
- The base of the transistor is conveniently biased through the transformer windings.
- The LC oscillator uses a transformer for feedback. Since the amplifier has a phase shift of  $180^\circ$ , the feedback transformer needs to provide an additional phase shift of  $180^\circ$  to provide positive feedback.

# AC Equivalent Circuit



- At resonance, the AC equivalent circuit can be simplified. The transformer winding inductance  $L$  resonates with the total capacitance in the circuit.  $R_T$  is the equivalent tank impedance at resonance.

# Small Signal Equivalent Circuit



- The forward gain is given by  $a(s) = -g_m Z_T(s)$ , where the tank impedance  $Z_T$  includes the loading effects from the input of the transistor

$$R_T = r_o \parallel R_L \parallel n^2 R_i$$

$$C = C_o + C_L + \frac{C_i}{n^2}$$

# Open-Loop Transfer Function

- The tank impedance is therefore

$$Z_T(s) = \frac{1}{sC + \frac{1}{R_T} + \frac{1}{Ls}} = \frac{Ls}{1 + s^2LC + sL/R_T}$$

- The loop gain is given by

$$af(s) = \frac{-g_m R_T}{n} \frac{\frac{L}{R_T} s}{1 + \frac{L}{R_T} s + s^2 LC}$$

- The loop gain at resonance is

$$A_\ell = \frac{-g_m R_T}{n}$$



# Closed-Loop Transfer Function

- The closed-loop transfer function is given by

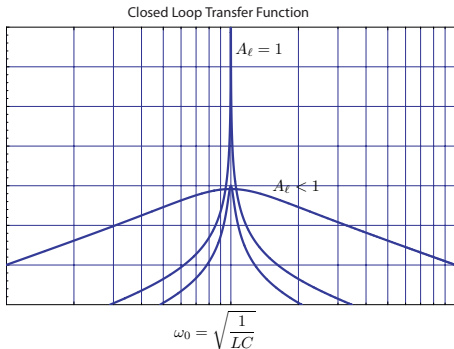
$$H(s) = \frac{-g_m R_T \frac{L}{R_T} s}{1 + s^2 LC + s \frac{L}{R_T} \left(1 - \frac{g_m R_T}{n}\right)}$$

- Where the denominator can be written as a function of  $A_\ell$

$$H(s) = \frac{-g_m R_T \frac{L}{R_T} s}{1 + s^2 LC + s \frac{L}{R_T} (1 - A_\ell)}$$

- Note that as  $n \rightarrow \infty$ , the feedback loop is broken and we have a tuned amplifier. The pole locations are determined by the tank  $Q$ .

# Oscillator Closed-Loop Gain vs $A_\ell$



- If  $A_\ell = 1$ , then the denominator loss term cancels out and we have two complex conjugate imaginary axis poles

$$1 + s^2 LC = (1 + sj\sqrt{LC})(1 - sj\sqrt{LC})$$

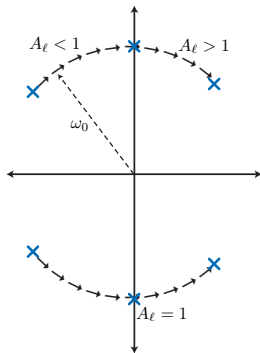
# Root Locus for LC Oscillator

- For a second order transfer function, notice that the magnitude of the poles is constant, so they lie on a circle in the s-plane

$$s_{1,2} = \frac{-a}{2b} \pm \frac{a}{2b} \sqrt{1 - \frac{4b}{a^2}} = \frac{-a}{2b} \pm j \frac{a}{2b} \sqrt{\frac{4b}{a^2} - 1}$$

$$|s_{1,2}| = \sqrt{\frac{a^2}{4b^2} + \frac{a^2}{4b^2} \left( \frac{4b}{a^2} - 1 \right)} = \sqrt{\frac{1}{b}} = \omega_0$$

## Root Locus (cont)

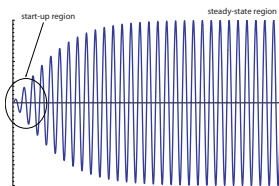


- We see that for  $A_\ell = 0$ , the poles are determined by the tank Q and lie in the LHP. As  $A_\ell$  is increased, the action of the positive feedback is to boost the gain of the amplifier and to decrease the bandwidth. Eventually, as  $A_\ell = 1$ , the loop gain becomes infinite in magnitude.

## Review: Role of Loop Gain

- The behavior of the circuit is determined largely by  $A_\ell$ , the loop gain at DC and resonance. When  $A_\ell = 1$ , the poles of the system are on the  $j\omega$  axis, corresponding to constant amplitude oscillation.
- When  $A_\ell < 1$ , the circuit oscillates but decays to a quiescent steady-state.
- When  $A_\ell > 1$ , the circuit begins oscillating with an amplitude which grows exponentially. Eventually, we find that the steady state amplitude is fixed.

# Steady-State Analysis

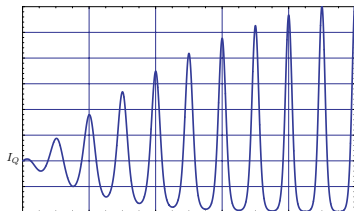
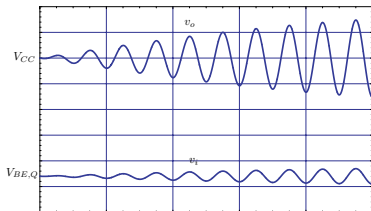


- To find the steady-state behavior of the circuit, we will make several simplifying assumptions. The most important assumption is the high tank  $Q$  assumption (say  $Q > 10$ ), which implies the output waveform  $v_o$  is sinusoidal.

$$V_{\omega_2} \approx \frac{1}{j\omega C} I_{\omega_2}$$

- Since the feedback network is linear, the input waveform  $v_i = v_o/n$  is also sinusoidal.
- We may therefore apply the large-signal periodic steady-state analysis to the oscillator. For the BJT, we can use the modified Bessel functions.

# Steady-State Waveforms



- The collector current is not sinusoidal, due to the large signal drive.
- The output voltage, though, is sinusoidal and given by

$$v_o \approx I_{\omega_1} Z_T(\omega_1) = G_m Z_T v_i$$

# Steady State Equations

- But the input waveform is a scaled version of the output

$$v_o = G_m Z_T \frac{v_o}{n} = \frac{G_m Z_T}{n} v_o$$

- The above equation implies that

$$\frac{G_m Z_T}{n} \equiv 1$$

- Or that the loop gain in steady-state is unity and the phase of the loop gain is zero degrees (an exact multiple of  $2\pi$ )

$$\left| \frac{G_m Z_T}{n} \right| \equiv 1 \qquad \angle \frac{G_m Z_T}{n} \equiv 0^\circ$$



- Recall that the small-signal loop gain is given by

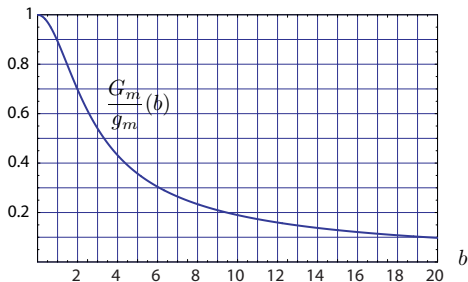
$$|A_\ell| = \left| \frac{g_m Z_T}{n} \right|$$

- Which implies a relation between the small-signal start-up transconductance and the steady-state large-signal transconductance

$$\left| \frac{g_m}{G_m} \right| = A_\ell$$

- Notice that  $g_m$  and  $A_\ell$  are design parameters under our control, set by the choice of bias current and tank  $Q$ . The steady state  $G_m$  is therefore also fixed by initial start-up conditions.

# Large Signal $G_m$ (BJT)



- To find the oscillation amplitude we need to find the input voltage drive to produce  $G_m$ .
- For a general non-linearity, we need to generate this curve using numerical integration (Fourier Series).
- The large signal  $G_m$  for an arbitrary non-linearity  $F(\cdot)$  is given by

$$G_m = I_{\omega_1}/V_i = \frac{1}{\pi} \int_0^{2\pi} F(V_i \cos(\omega t)) \cos(\omega t) dt$$

## Large Signal $G_m$ (BJT cont)

- For a BJT, we found that under the constraint that the bias current is fixed

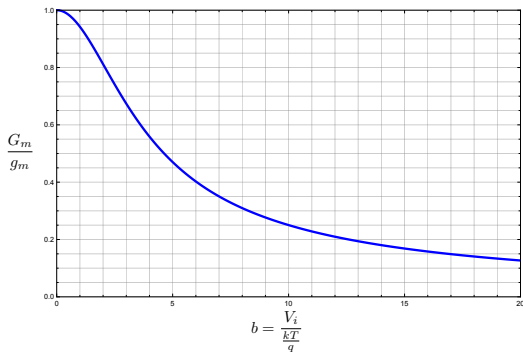
$$I_{\omega_1} = \frac{2I_1(b)}{I_0(b)} I_Q = G_m v_i = G_m b \frac{kT}{q}$$

- Thus the large-signal  $G_m$  is given by

$$G_m = \frac{2I_1(b)}{bI_0(b)} \frac{qI_Q}{kT} = \frac{2I_1(b)}{bI_0(b)} g_m$$

$$\frac{G_m}{g_m} = \frac{2I_1(b)}{bI_0(b)}$$

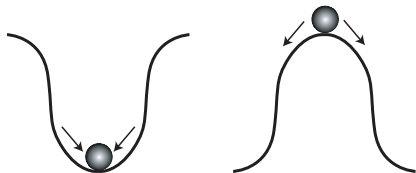
# Large Signal $G_m$ (Differential Pair)



- For a differential pair (BJT), we can use numerical integration to find the ratio of the large signal  $G_m$  to the small-signal  $g_m$ . The  $n$ th harmonic (single-ended) output is given by:

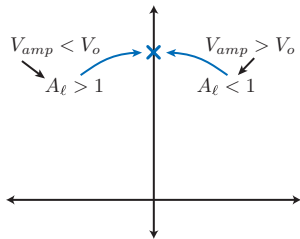
$$I_{\omega_n}/I_{EE} = \int_0^{2\pi} \frac{-\cos(nt)}{\pi (e^{b \cos(t)} + 1)} dt$$

# Stability (Intuition)



- Here's an intuitive argument for how the oscillator reaches a stable oscillation amplitude. Assume that initially  $A_l > 1$  and oscillations grow. As the amplitude of oscillation increases, though, the  $G_m$  of the transistor drops, and so effectively the loop gain drops.
- As the loop gain drops, the poles move closer to the  $j\omega$  axis. This process continues until the poles hit the  $j\omega$  axis, after which the oscillation ensues at a constant amplitude and  $A_\ell = 1$ .

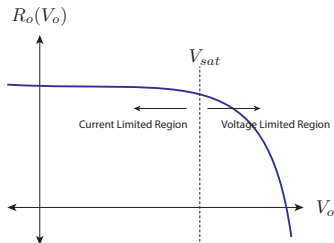
## Intuition (cont)



$$\frac{G_m(V_o)Z_T(\omega_1)}{n} = 1$$

- To see how this is a stable point, consider what happens if somehow the oscillation amplitude increases.
- With increasing amplitude over  $V_o$ , we know that  $A_\ell < 1$  due to the compressive characteristics of the oscillator. This causes the amplitude to decay.
- If the oscillation amplitude were to decay below  $V_o$ , the  $G_m$  increases and this causes the loop gain to grow. Thus the system also rolls back to the point where  $A_\ell = 1$ .
- Up to now we have only considered the  $G_m$  non-linearity as a possible limiting mechanism. What happens, for example, if we do not limit the bias current of a device?

# Other Limiting Mechanisms



- The  $G_m$  curve may become expansive and the oscillation amplitude may not limit from  $G_m$  but from other mechanism.
- If the oscillation amplitude causes the voltage at the drain of a device to grow sufficiently large, the device may enter “triode” region (or saturation for a bipolar) and thus the output resistance non-linearity will limit the amplitude.
- In the literature, operation in the  $G_m$  limiting region is sometimes called the “current limited” regime, whereas operation in the output impedance limiting regime is called the “voltage limited” regime.

# BJT Oscillator Design

- Say we desire an oscillation amplitude of  $v_o = 100 \text{ mV}$  at a certain oscillation frequency  $\omega_0$ .
- We begin by selecting a loop gain  $A_\ell > 1$  with sufficient margin. Say  $A_\ell = 3$ .
- We also tune the  $LC$  tank to  $\omega_0$ , being careful to include the loaded effects of the transistor ( $r_o$ ,  $C_o$ ,  $C_{in}$ ,  $R_{in}$ )
- We can estimate the required first harmonic current from

$$I_{\omega_0} = \frac{v_o}{R'_T}$$

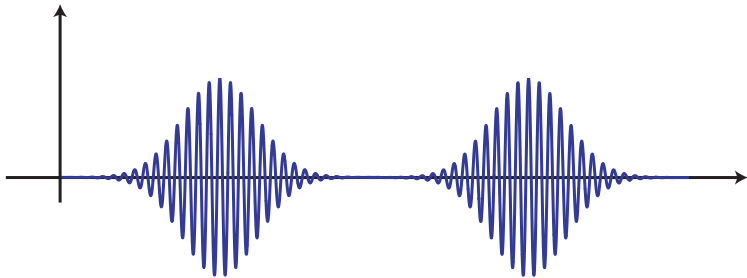


- This is an estimate because the exact value of  $R_T$  is not known until we specify the operating point of the transistor. But a good first order estimate is to neglect the loading and use  $R'_T$
- We can now solve for the bias point from

$$I_{\omega_1} = \frac{2I_1(b)}{I_0(b)} I_Q$$

- $b$  is known since it's the oscillation amplitude normalized to  $kT/q$  and divided by  $n$ . The above equation can be solved graphically or numerically.
- Once  $I_Q$  is known, we can now calculate  $R''_T$  and iterate until the bias current converges to the final value.

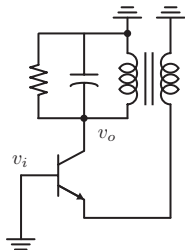
# Squegging



- Squegging is a parasitic oscillation in the bias circuitry of the amplifier.
- It can be avoided by properly sizing the emitter bypass capacitance

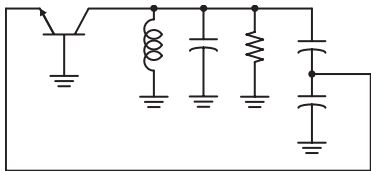
$$C_E \leq nC_T$$

# Common Base Oscillator



- Another BJT oscillator uses the common-base transistor. Since there is no phase inversion in the amplifier, the transformer feedback is in phase.
- Since we don't need phase inversion, we can use a simpler feedback consisting of a capacitor divider.

# Colpitts Oscillator



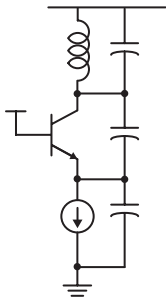
- The cap divider works at higher frequencies. Under the cap divider approximation

$$f \approx \frac{C_1}{C_1 + C'_2} = \frac{1}{n}$$

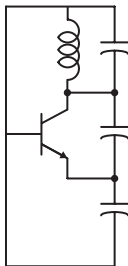
$$n = 1 + \frac{C'_2}{C_1}$$

- $C'_2$  includes the loading from the transistor and current source.

# Colpitts Bias

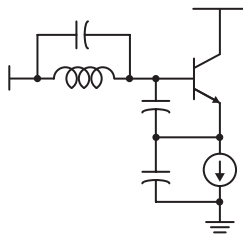
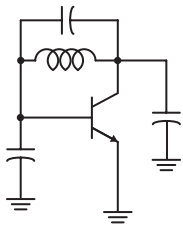


- Since the bias current is held constant by a current source  $I_Q$  or a large resistor, the analysis is identical to the BJT oscillator with transformer feedback. Note the output voltage is divided and applied across  $v_{BE}$  just as before.



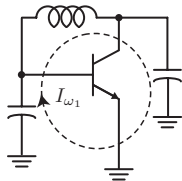
- If we remove the explicit ground connection on the oscillator, we have the template for a generic oscillator.
- It can be shown that the Colpitts family of oscillator never squegg.

## CE and CC Oscillators



- If we ground the emitter, we have a new oscillator topology, called the Pierce Oscillator. Note that the amplifier is in CE mode, but we don't need a transformer!
- Likewise, if we ground the collector, we have an emitter follower oscillator.
- A fraction of the tank resonant current flows through  $C_{1,2}$ . In fact, we can use  $C_{1,2}$  as the tank capacitance.

# Pierce Oscillator



- If we assume that the current through  $C_{1,2}$  is larger than the collector current (high Q), then we see that the same current flows through both capacitors. The voltage at the input and output is therefore

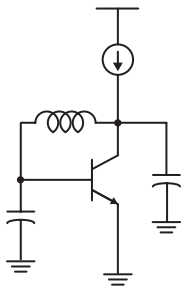
$$v_o = I_{\omega_1} \frac{1}{j\omega C_1}$$

$$v_i = -I_{\omega_1} \frac{1}{j\omega C_2}$$

- or

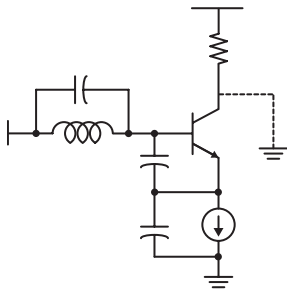
$$\frac{v_o}{v_i} = n = \frac{C_2}{C_1}$$





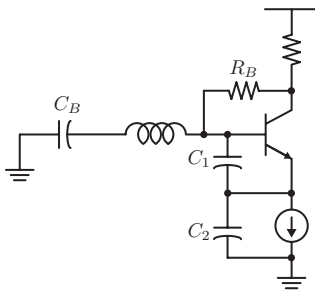
- A current source or large resistor can bias the Pierce oscillator.
- Since the bias current is fixed, the same large signal oscillator analysis applies.

# Common-Collector Oscillator



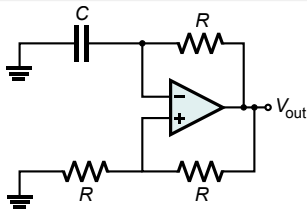
- Note that the collector can be connected to a resistor without changing the oscillator characteristics. In fact, the transistor provides a buffered output for “free”.

# Clapp Oscillator



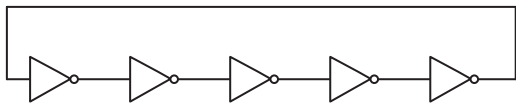
- The common-collector oscillator shown above uses a large capacitor  $C_T$  to block the DC signal at the base.  $R_B$  is used to bias the transistor.
- If the shunt capacitor  $C_T$  is eliminated, then the capacitor  $C_B$  can be used to resonate with  $L$  and the series combination of  $C_1$  and  $C_2$ . This is a series resonant circuit.

# Relaxation Oscillator



- Instead of using an  $LC$  tanks as the reference frequency, a relaxation oscillator uses an electronic delay element ( $RC$  or  $I$  and  $R$ ).
- Suppose that the output is railed at the positive supply. The capacitor  $C$  is charged through a resistor until the reference level at  $V^+$  is crossed ( $V_{DD}/2$ ), at which point the output transitions to the negative rail ( $V^- > V^+$ ), and  $C$  is discharged until it reaches the lower reference ( $-V_{SS}/2$ ). Then the cycle repeats.

# Ring Oscillator



- In CMOS technology, ring oscillators are ubiquitous. If inverters are used, an odd number of stages will oscillate (unstable) and the oscillation period is twice the delay of the line.
- Differential versions can be built with an even number of stages by inverting the phase.
- The oscillation frequency can be controlled by varying the delay of each element using a “current starved” topology.